



GOOD MORNING  
Have Good Trading Day

THURSDAY



Price is what you pay.  
Value is what you get.

- Warren Buffet



## MARKET PULSE

### INDIAN INDICES

NAME	CMP	NET CH.	%
SENSEX	26652	+258	+0.98
NIFTY	8224	+82	+1.01

### INDIAN ADR'S

SYMBOL	CLOSE	GAIN/ LOSS %
DRREDDY	46.73	+0.71
HDFCBANK	64.52	+0.22
ICICIBK	7.84	+4.12
INFY	14.48	-0.14
TATAMOTOR	33.07	-0.30
WIPRO	9.59	+0.10

### FII AND MF ACTIVITY

SYMBOL	In Crs.
FIIs Eq (Provisional)	-434.42
FIIs Index Future	658.55
FIIs Index Options	480.91
FIIs Stock Future	370.82
FIIs Stock Options	37.55
DIIs Eq (Provisional)	676.68

### CURRENCY

RBI RATE	30-NOV-2016
RUPEE - \$	68.5260
EURO	72.8431
YEN 100	60.7900
GBP	85.5342

## MARKET PULSE

### GLOBAL INDICES

NAME	CMP	NET CH.	%
DOW	19123	+1	+0.01
NASDAQ	5323	-56	-1.05
NIKKEI	18729	+421	+2.23
HANG SENG	22967	+177	+0.78
SGX NIFTY	8263	+23	+0.28

### WORLD COMMODITIES

FUTURE	US\$	CHANGES
CRUDE	49.55	+0.11
NATURAL GAS	3.341	-0.011
GOLD	1170.9	-3.0
SILVER	16.445	-0.037
COPPER	2.6335	+0.0005

### WORLD EVENTS

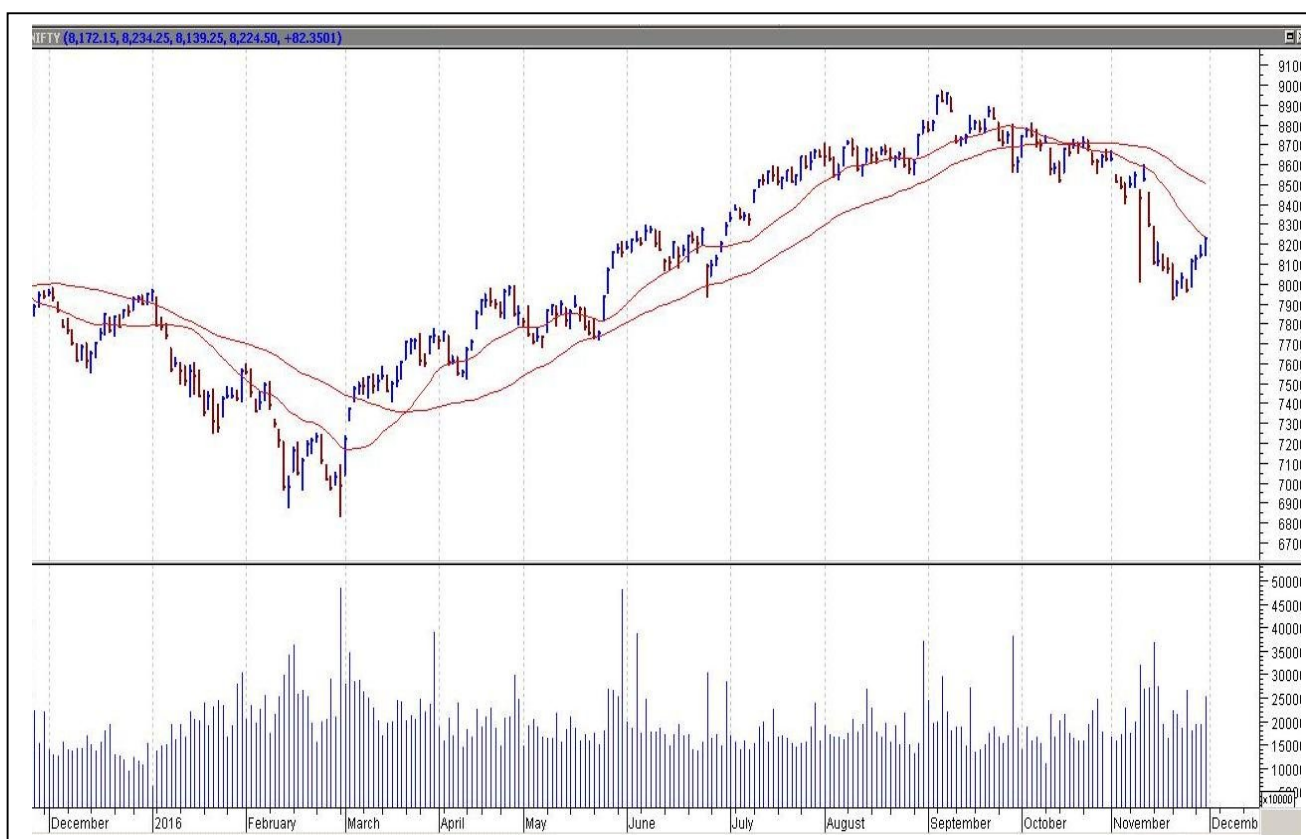
- US: Unemployment Claims
- ISM Manufacturing PMI
- UK: Manufacturing PMI

## TOP STORY

- India Q2 GDP grew 7.3% marginally quicker than the previous quarter's 7.1% but moderated from 7.6 percent in July-September 2015
- OPEC says -Will reduce production by 1.2 m bpd from January 1
- Lupin's Swiss arm gets US FDA nod for Antara capsules (used to treat cholesterol issues)
- Jet fuel prices cut by 3.7 percent (Rs 1,881) to Rs 48,379/kL in Delhi
- Wipro signed agreement for sale of EcoEnergy division for USD 70mn to Chubb Alba Control Systems
- L&T Infotech completed 100 percent acquisition of AugmentIQ Data Sciences
- Cyient Signs Pact To Acquire 100 percent Stake In UK Based Blom Aerofilms
- Punj Lloyd Q2 -Net loss at Rs 225.8 crore versus loss of Rs 226.4 crore (YoY). Total income down 1.3 percent at Rs 995.7 crore versus Rs 1,008.9 crore (YoY)



## NIFTY CHART



## MARKET COMMENTARY

Indian benchmark indices staged an astonishing performance on the last day of the month by vehemently rallying close to a percentage points in the session and re-conquering their psychological levels. While hopes of strong GDP for September quarter helped investors' sentiment, the side-effects of demonetisation continued to have a bearing on the market. The general expectation is that economic growth accelerated to 7.5% in the September quarter from 7.1% in the June quarter but lower than 7.9% growth posted for the March quarter. Sentiments were buoyant in the second half of trade after OPEC ministers gathering in Vienna expressed renewed optimism about salvaging a deal to cut oil production and prop up global prices. For today's trade Nifty likely to trade in the range between 8195 – 8185 in the upper side and 8235 – 8255 in the lower side.

### MARKET LEVELS

	CMP	SUPPORT LEVELS				RESISTANCE LEVELS			
NIFTY	8224	8235	8255	8275	8295	8195	8185	8165	8145
USDINR	68.55	68.4	68.3	68.2	68.1	68.6	68.7	68.8	68.9





#### BULK DEALS (BSE)

SCRIP	CLIENT NAME	BUY/SELL	QUANTITY	PRICE
AHLUCONT	NORGES BANK ON ACCOUNT OF THE GOVERNMENT PENSION FUND GLOBAL	S	911,513	245
INTENTECH	AKG FINVEST LIMITED	S	158,920	97.41
INVENTURE	PIONEER SECURITIES PRIVATE LIMITED	B	450,313	13.56

#### BULK DEALS (NSE)

SCRIP	CLIENT NAME	BUY/SELL	QUANTITY	PRICE
BHARATFORG	SUNDARAM TRADING AND INVESTMENT PVT LTD	SELL	2327000	879.95
HINDPETRO	INTEGRATED CORE STRATEGIES (ASIA) PTE.LTD.	SELL	6070709	471.03
IDFCBANK	SWISS FINANCE CORPORATION (MAURITIUS) LIMITED	BUY	46384000	68.25
IDFCBANK	INTEGRATED CORE STRATEGIES (ASIA) PTE.LTD.	SELL	20448113	68.37
IDFCBANK	SIPADAN INVESTMENTS (MAURITIUS) LIMITED	SELL	80439002	68.31

#### SCRIP'S IN F&O BAN

(To resume for normal trading below 80% of market wide limit required)

NIL

#### Initial Public Offering (IPO)

Company Name	Security type	Issue Start Date	Issue End Date	Status
Sheela Foam Ltd	Equity	29-Nov-2016	01-Dec-2016	Open



NIFTY 50 STOCKS: SUPPORT & RESISTANCE						
Symbol	Close	Support 1	Support 2	Pivot Point	Resistance1	Resistance2
ACC	1342	1325	1309	1340	1357	1372
ADANI PORTS	278	275	273	279	281	284
AMBUJACEM	211	207	203	209	213	215
ASIANPAINT	970	957	943	966	979	988
AXISBANK	470	464	459	468	473	477
BAJAJ-AUTO	2685	2669	2654	2680	2695	2706
BANKBARODA	164	162	160	163	166	167
BHARTIARTL	325	323	322	325	326	328
BHEL	130	129	128	130	131	133
BOSCH LTD	20525	20257	19989	20418	20686	20847
BPCL	644	636	628	644	651	659
CAIRN	252	245	238	250	256	261
CIPLA	567	562	558	568	572	578
COALINDIA	309	306	302	308	311	314
DRREDDY	3197	3178	3158	3198	3217	3237
GAIL	425	421	416	427	431	437
GRASIM	870	850	829	863	883	896
HCLTECH	804	798	792	804	810	817
HDFC	1263	1243	1223	1258	1278	1292
HDFCBANK	1200	1186	1173	1194	1207	1215
HEROMOTOCO	3166	3142	3119	3158	3182	3198
HINDALCO	176	173	170	176	179	182
HINDUNILVR	844	833	823	842	853	861
ICICIBANK	266	259	252	263	269	273
IDEA	77	76	75	78	79	81
INDUSINDBK	1087	1064	1041	1080	1103	1119
INFY	976	965	955	971	981	987
ITC	233	230	227	232	235	237
KOTAKBANK	755	744	732	752	764	772
LT	1383	1358	1333	1375	1399	1416
LUPIN	1505	1486	1467	1516	1536	1566
M&M	1185	1178	1171	1188	1195	1205
MARUTI	5266	5150	5034	5216	5332	5398
NTPC	163	162	161	163	164	165
ONGC	289	284	279	288	293	296
PNB	138	136	134	137	139	141
POWERGRID	192	189	186	191	194	196
RELIANCE	990	984	979	992	998	1006
SBIN	258	254	250	257	261	265
SUNPHARMA	710	704	699	712	717	725
TATAMOTORS	459	455	451	459	464	468
TATAPOWER	74	72	70	73	75	77
TATASTEEL	415	408	400	412	419	423
TCS	2276	2247	2219	2271	2300	2323
TECHM	485	481	477	485	490	494
ULTRACEMCO	3603	3559	3515	3600	3644	3684
VEDL	230	225	219	228	233	236
WIPRO	465	461	457	466	470	475
YESBANK	1174	1153	1132	1167	1188	1202
ZEEL	456	450	445	456	462	468



## CORPORATE ACTION / BOARD MEETINGS

NSE Download Ref No. : NSE/CML/33691:-Pricol Limited will be suspended from trading w.e.f December 5, 2016 due to Scheme of Amalgamation

NSE Download Ref No. : NSE/CML/33703:- Face Value Split - Sunil Hitech Engineers Limited from Rs. 10 to Rs. 1 w.e.f. December 1, 2016

NSE Download Ref.No: NSE/CML/33711:- Change in Name of the Company from Arvind Infrastructure Ltd (ARVINFRA) to ArvindSmartSpaces Ltd (ARVSMART) w.e.f. December 05, 2016

### BOARD MEETINGS

COMPANY NAME	DATE	PURPOSE	RS. PER SH.
SUNILHITEC	1-Dec-16	Bonus1:1/FaceValue Split From Rs10 To Re1	
INGERRAND	1-Dec-16	Dividend	3
PRICOL	5-Dec-16	Scheme Of Amalgamation	
TIDEWATER	6-Dec-16	Dividend	50
BALKRISIND	7-Dec-16	Dividend	
VTL	8-Dec-16	Buy Back	
INDIANHUME	9-Dec-16	Bonus 1:1	
JINDALSAW	14-Dec-16	Annual General Meeting/Dividend	1
COLPAL	15-Dec-16	Dividend	
ALANKIT	15-Dec-16	Face value Split From Rs 2 To Re 1	
BPL	15-Dec-16	Annual General Meeting	
NAGAROIL	16-Dec-16	Annual General Meeting	
GILLANDERS	19-Dec-16	Annual General Meeting	
VISASTEEL	19-Dec-16	Annual General Meeting	
JETAIRWAYS	19-Dec-16	Annual General Meeting	
BANARISUG	21-Dec-16	Annual General Meeting/Dividend	7.5
BALMLAWRIE	26-Dec-16	Bonus 3:1	

## NEWS & RUMOURS:

- Gold (Spot Dollar) major support = \$1146/\$1123 & Resistance = \$1197/\$1236.
- Crude oil range->\$45 to \$55.
- Oil Surges as OPEC Nears Deal; Treasuries Slump on Jobs Report: - Oil rose the most in seven months after OPEC ministers were said to have forged a deal to cut production, sending stocks of energy producers and currencies of commodity-exporting nations higher.
- Dollar pushes higher vs. other majors after U.S. data: - The dollar pushed higher against the other major's currencies on Wednesday, after a batch of mixed U.S. economic reports and news of a long-awaited agreement to limit oil production. The U.S. National Association of Realtors said [pending home sales](#) rose by 0.1% last month, missing expectations for an increase of 0.2%. The report came after U.S. payroll processing firm ADP said [non-farm private employment](#) rose by 216,000 in November, above forecasts for an increase of 165,000.
- Gold slips as dollar edges higher: - Gold prices slid on Wednesday as the dollar pushed higher after upbeat U.S. economic reports on Tuesday supported the case for higher interest rates.
- OPEC agrees 1.2 mn b/d output cut: reports: - [OPEC](#) Wednesday agreed to a 1.2 mn b/d cut in output to 32.5 mn: Bloomberg. Bloomberg quoted a source as saying that the deal is not yet public. Reuters also quoted an OPEC source as saying accord reached to cut to 32.5 mn b/d.  
If confirmed this would be the first cut by OPEC since 2008.

## TRENDS & OUTLOOK – DATE: 01-Dec-2016

### PRECIOUS METALS:

COMMDITY (MCX)	S2	S1	PIVOT POINT	R1	R2
GOLD (Feb)	27700	27966	28290	28611	28899
SILVER (Mar)	38139	39200	40530	41700	42900

### BASE METALS

COMMDITY (MCX)	S2	S1	PIVOT POINT	R1	R2
COPPER (Feb)	381	390	399	409	421
ZINC (Dec)	178.45	181.60	185.45	190.35	195.55
LEAD (Dec)	153.45	156.40	160.50	164.55	168.60
NICKEL (Dec)	725	741	763	786	815

### ENERGY

COMMDITY (MCX)	S2	S1	PIVOT POINT	R1	R2
CRUDE OIL (Dec)	3000	3130	3310	3475	3636
NATURAL GAS (Dec)	216	223	228	234	239

### DATA TALKS : TODAY'S ECONOMIC DATA :

Manufacturing PMI, Non-Manufacturing PMI & Caixin Manufacturing PMI of China, Manufacturing PMI of GBP, Challenger Job Cuts y/y, Final Manufacturing PMI, ISM Manufacturing PMI, Construction Spending m/m, ISM Manufacturing Prices, Natural Gas Storage, Total Vehicle Sales.





LET THE  
WOMAN  
POWER RISE

**WOMEN  
DESK**

All the Ladies in the house are  
cordially invited to come  
& explore their trading talents.

**TOLL FREE: 18001030059**





Registered Office

Indira House, 3rd Floor, 5 Topiwala Lane,  
Opp. Lemington Road Police Station, Grant Road (East), Mumbai - 400007.

Corporate Office

'Ramavat House' E-15, Saket Nagar, Indore - 452018 (M.P.)

Customer Care

Tel: +91-731-4097170/ 71/ 72/ 73/ 74 M. +91 93031 72345

Email: [customercare@indiratrade.com](mailto:customercare@indiratrade.com) [www.indiratrade.com](http://www.indiratrade.com)



INSTITUTIONAL DEALING UNIT

Africa House, 5, Topiwalla Lane, Lamington Road, Mumbai, 400007

Tel: +91 22 30080678 Fax : +91 22 23870767 Email : [ie@indiratrade.com](mailto:ie@indiratrade.com)

**Disclaimer**

This report is for private circulation within the Indira Group. This report is strictly confidential and for information of the selected recipient only and may not be altered in any way, transmitted to, copied or distributed, in part or in whole, to any other person or to the media or reproduced in any form. This report should not be construed as an offer or solicitation to buy or sell any securities or any interest in securities. It does not constitute a personal recommendation or take into account the particular investment objectives, financial situations, or any such factor. The information, opinions estimates and forecasts contained here have been obtained from, or are based upon, sources we believe to be reliable, but no representation of warranty, express or implied, is made by us to their accuracy or completeness. Opinions expressed are our current opinions as of the date appearing on this material only and are subject to change without notice.